

WW617 LAHTI (FI)

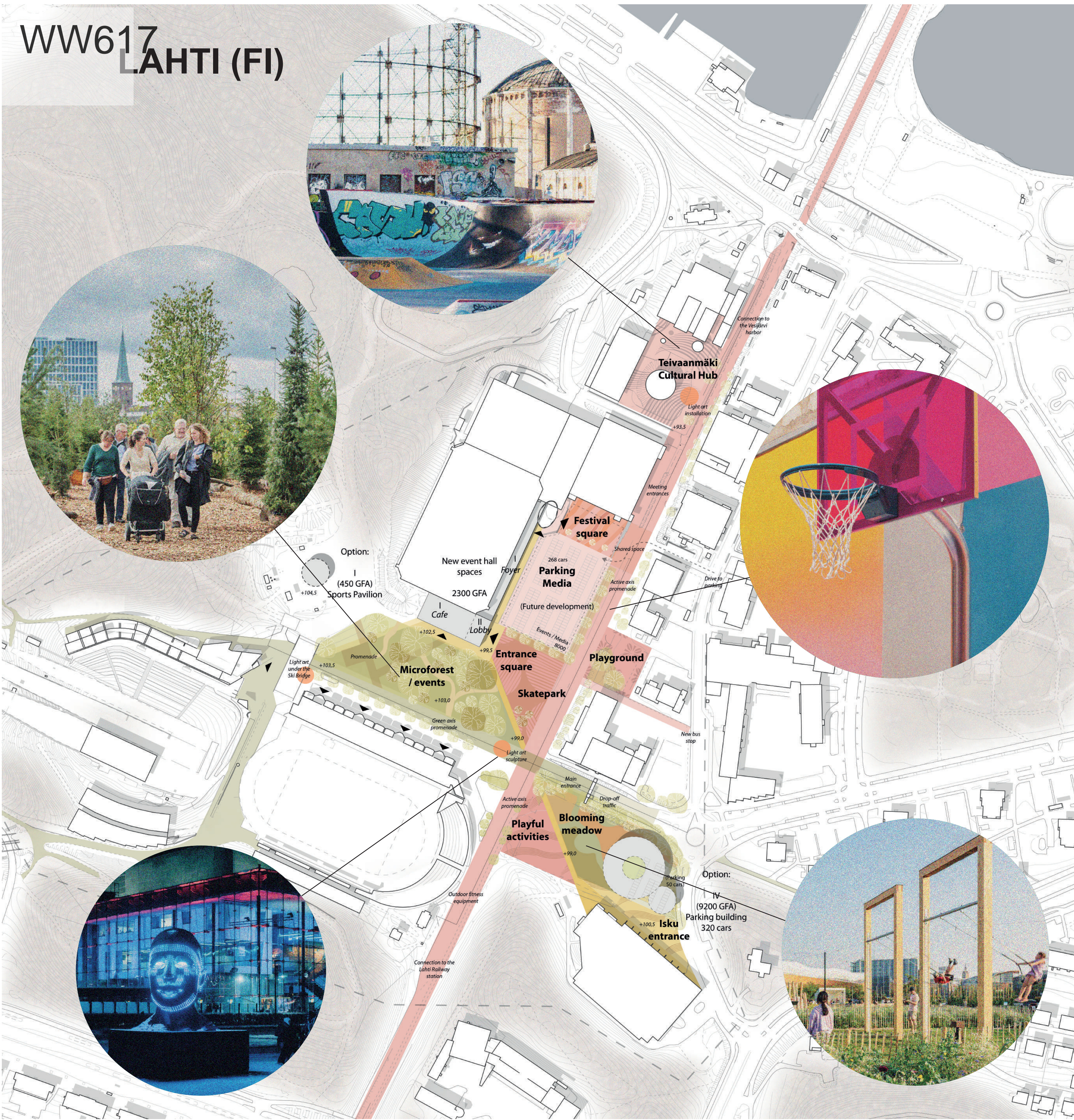
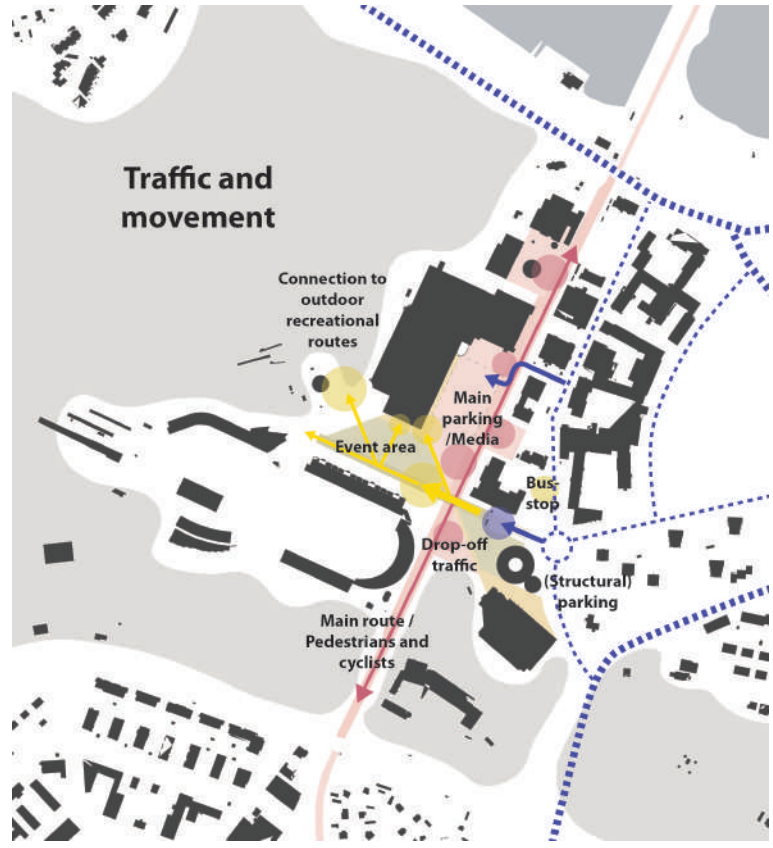
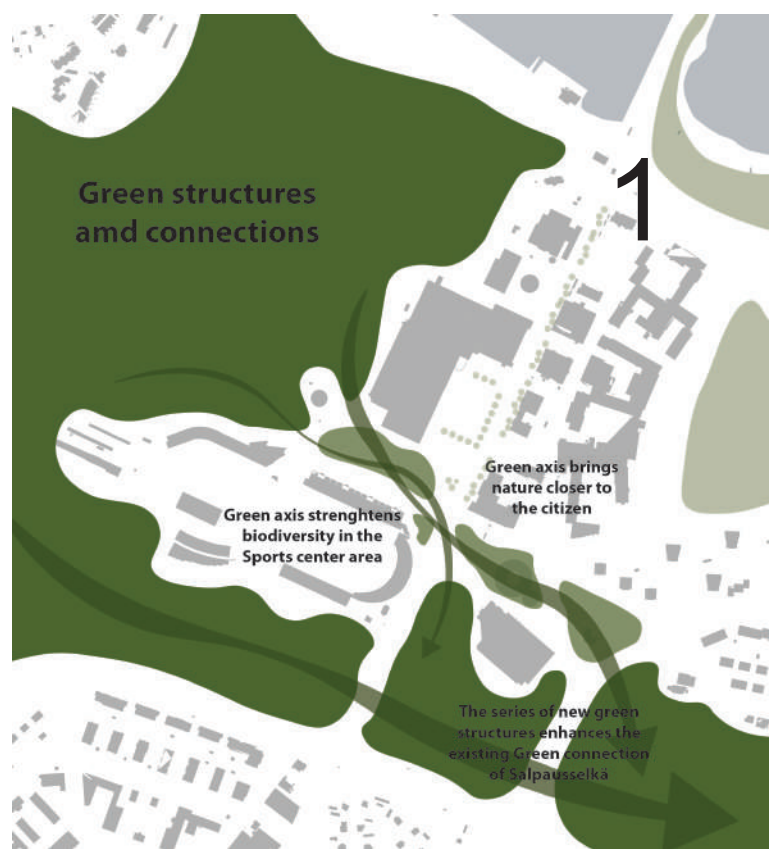


Illustration of the area 1:2000



Diagrams 1:10 000

Soft Light

The name Soft Light evokes the proposal's core vision: a landscape shaped through gentle interventions that respect the existing character, enhance ecological connections, and use light art to support atmosphere and orientation. The design responds to a setting where nationally significant sports infrastructure intersects with a richly layered recreational and ecological landscape. The design builds upon its existing spatial framework and cultural identity, clarifying its dual function as a space for everyday use and international events.

At the core of the strategy is a commitment to light-touch interventions. The proposal enhances existing axes of Salpausselänkatu and old Satamarata railway route, strengthens ecological connections, and introduces new programs for various user-groups through small-scale additions and reuse. Together, these measures reinforce Lahti's ambition to lead in sustainable urban transformation while preserving the character of the Salpausselkä ridge.

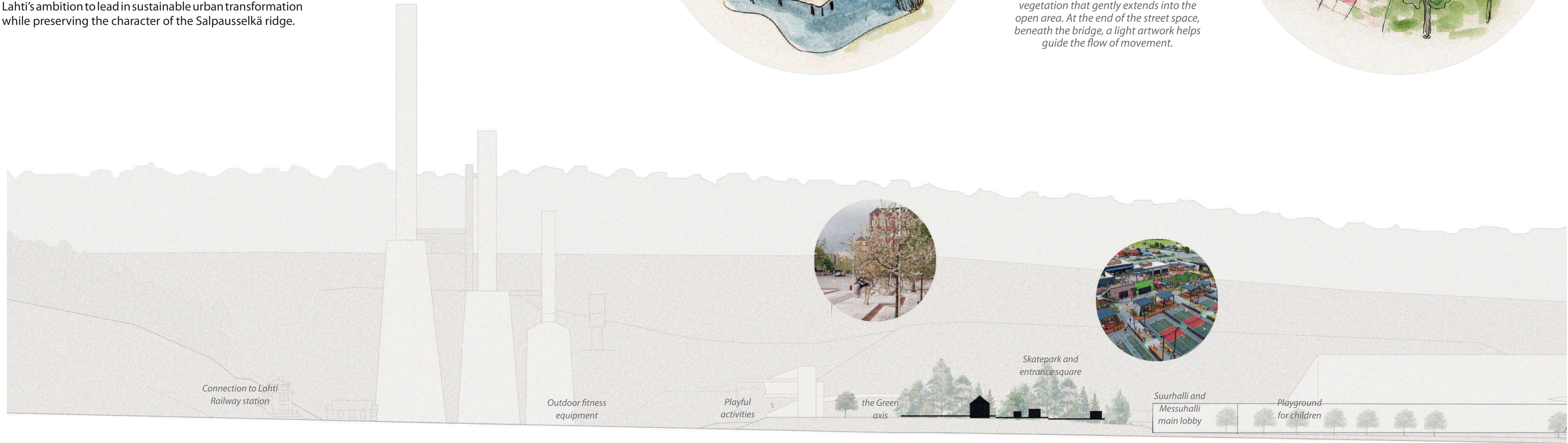
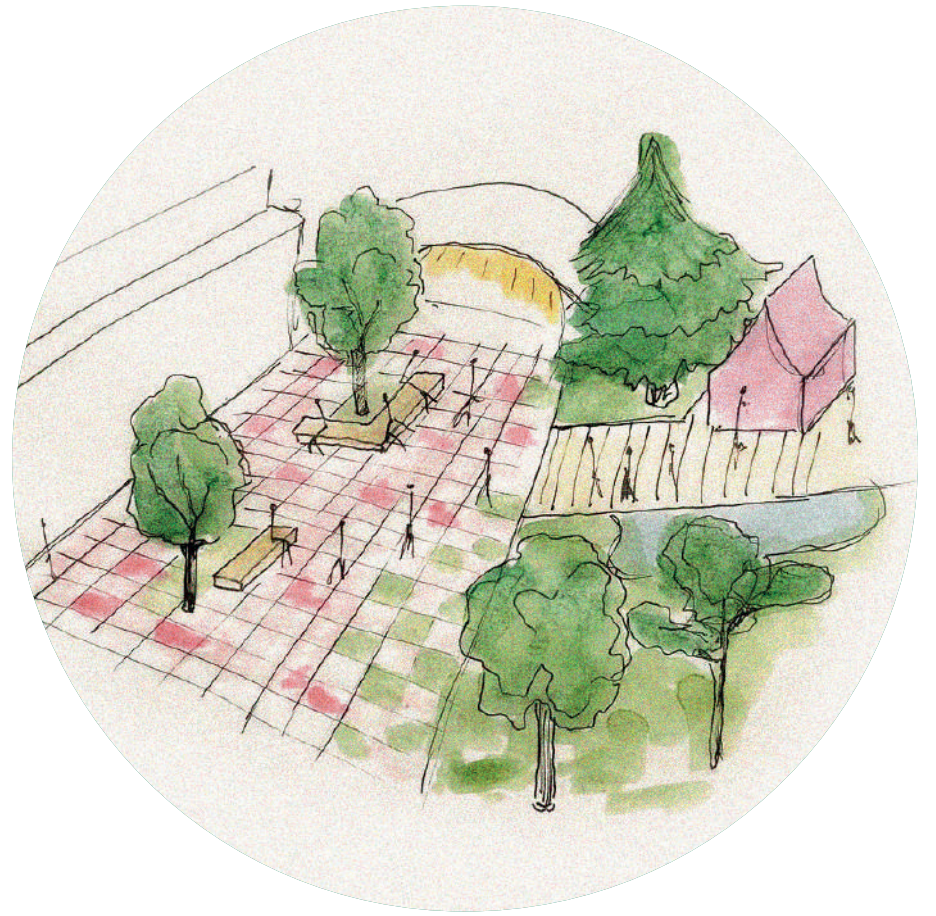
The green values of the Salpausselkä landscape are integrated throughout the proposal, with a focus on enhancing biodiversity. Native plant species extend the surrounding forest ecology into the heart of the area, existing trees are preserved wherever possible, and new flower meadows are introduced to support pollinators and add seasonal color.

Art forms a cohesive part of the area's identity. A lighting art concept reinforces this character by highlighting key urban spaces and places of significance throughout the year. Inspired by nature and movement, the concept aims to elevate the spirit of the place, create a vibrant and memorable public realm, and present a distinctive image of Lahti during moments of international attention.



The microforest offers inviting spaces for relaxation, with boardwalk-style paths that guide visitors while protecting the undergrowth. Woodchip-covered areas feature traditional Finnish forest amenities such as a campfire and shelters. Natural elevation changes are utilised for stormwater management, forming a functional and lush rain garden within the forest vegetation.

The main access to Mäkimonttu features a street space with an open, plaza-like character, lined with street trees and furnished with seating and places to gather. The boundary between the urban space and the forest zone is softened by vegetation that gently extends into the open area. At the end of the street space, beneath the bridge, a light artwork helps guide the flow of movement.

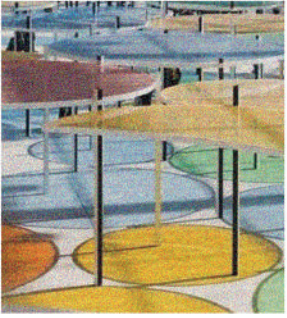
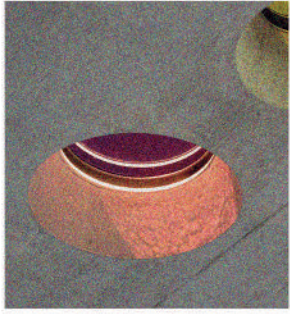
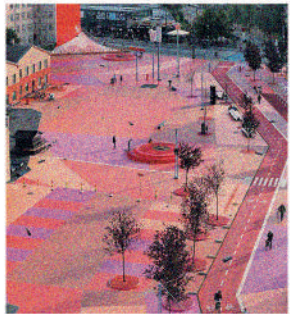


Active axis

The second primary axis, the Active Axis, follows the line of the former Satamarata railway, linking Lahti railway station and Vesijärvi harbor to the sports centre area through a new, inviting, and distinctively designed pedestrian and cycling route. Reimagined as a linear public spine, it supports a wide range of activities and urban encounters, with a particular focus on everyday use and the needs of local residents.

A sequence of urban-scale, playfully programmed plazas punctuates the route. Designed for all ages, the spaces include a play zone near the daycare, skate areas for youth, and activity points with seating for seniors. At the northern part of the axis, Teivaanmäki's former power plant becomes a cultural node, housing exhibitions, workshops, and outdoor art.

The material palette emphasises reuse and tactile quality. Seating and skate features incorporate salvaged concrete elements from existing structures. Planting is applied more urbanly, for example through street trees, raised beds, and green wall structures. Canopies add shelter to open areas, enhancing comfort while supporting flexible and year-round use. The result is a richly textured sequence of spaces, embedded in local material cycles.



Conceptual section along the Active Axis, 1:800 – illustrating spatial atmosphere, material and texture palette, and program - 1/2