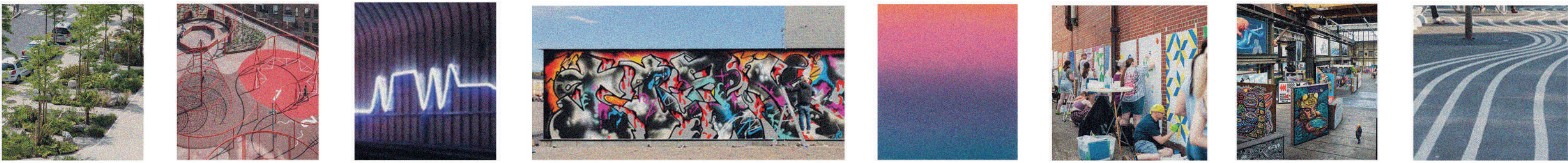


Aerial axonometric illustration



Perspective from the central area, along the pathway leading to the new annex building of the Suurhalli complex. Framing the view are two key axes: the Green axis and microforest to the right, and the Active axis and functional plaza to the left.



The Active Axis, with its clear identity and strong spatial logic, provides a robust foundation for future development. Both ends of the axis can be further elaborated within the same concept: to the north, by exploring connections to the Ranta-Kartano route network and art concept; and to the south, by reinforcing the area's identity through the railway link. Over time, the urban realm may also extend into the adjacent Svinhufvudinkatu blocks through incremental, exploratory steps, such as temporary uses or adaptive reuse, should opportunities emerge to reprogram existing buildings for civic life.

Conceptual section along the Active Axis, 1:800 – illustrating spatial atmosphere, material and texture palette, and program - 2/2