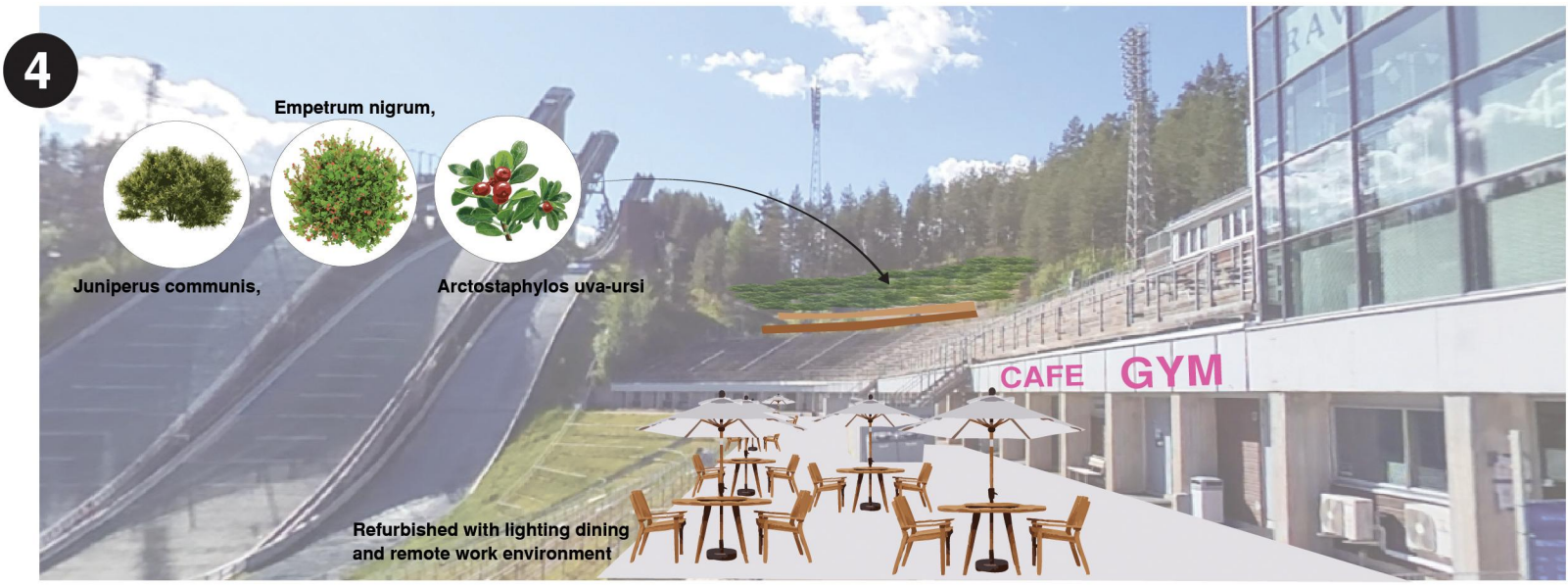


# THE LIVING

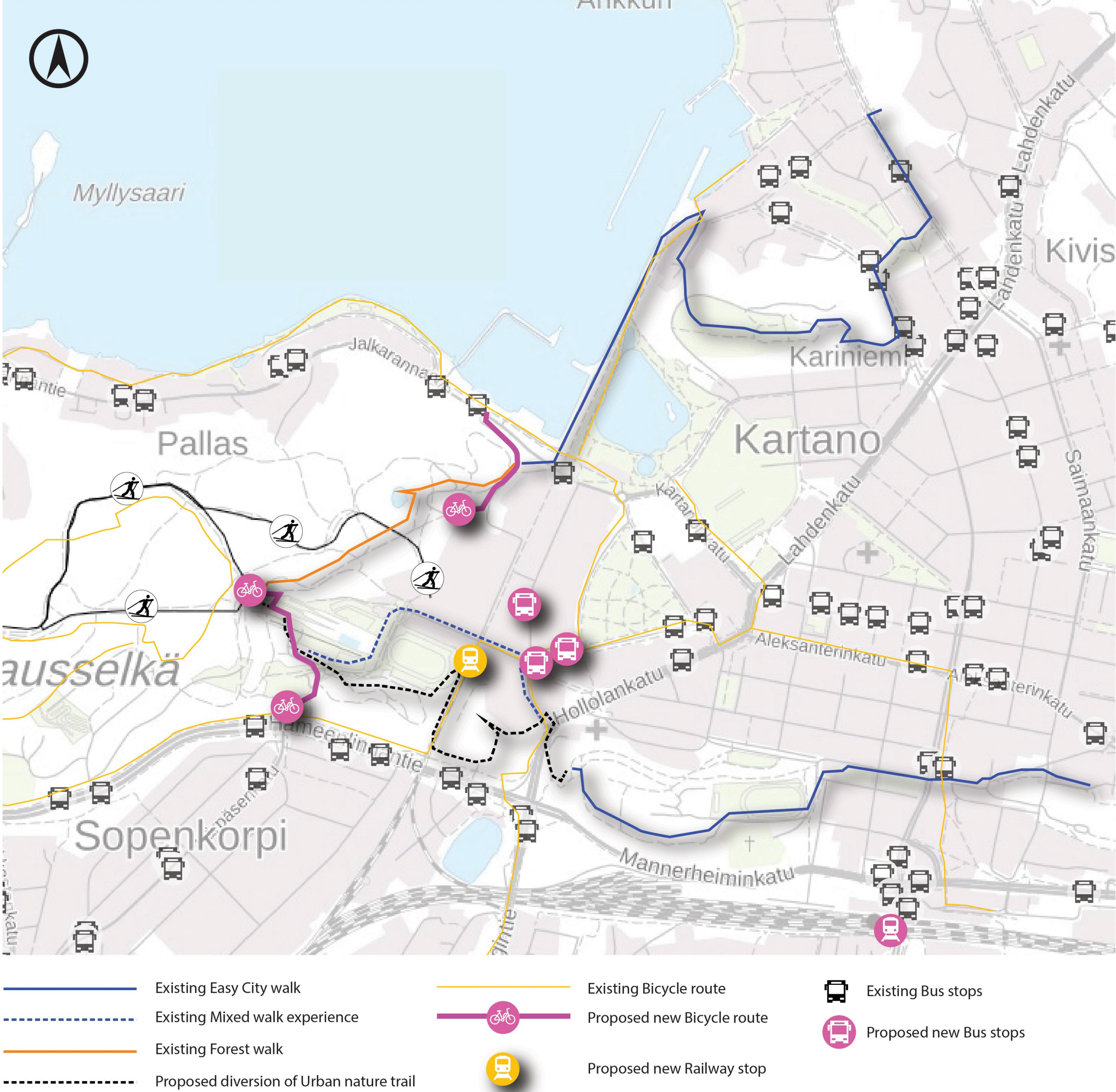
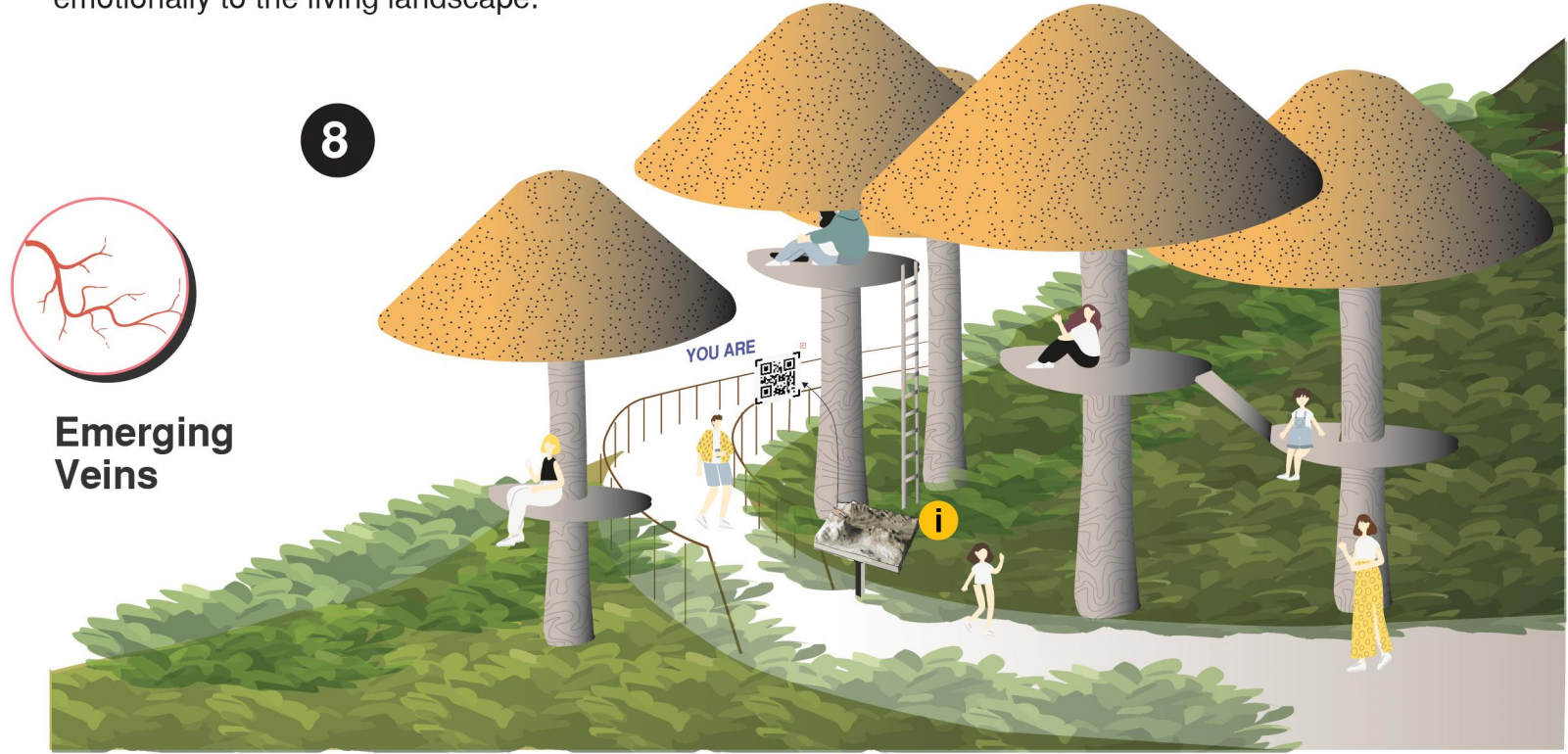
LANDSCAPE: A VISION FOR LAHTI SPORTS CENTRE



Renewing the stage and platform, Adding new amenities for social engagement such as summer time ice cream, renting equipments such sticks for exercising on the stairs

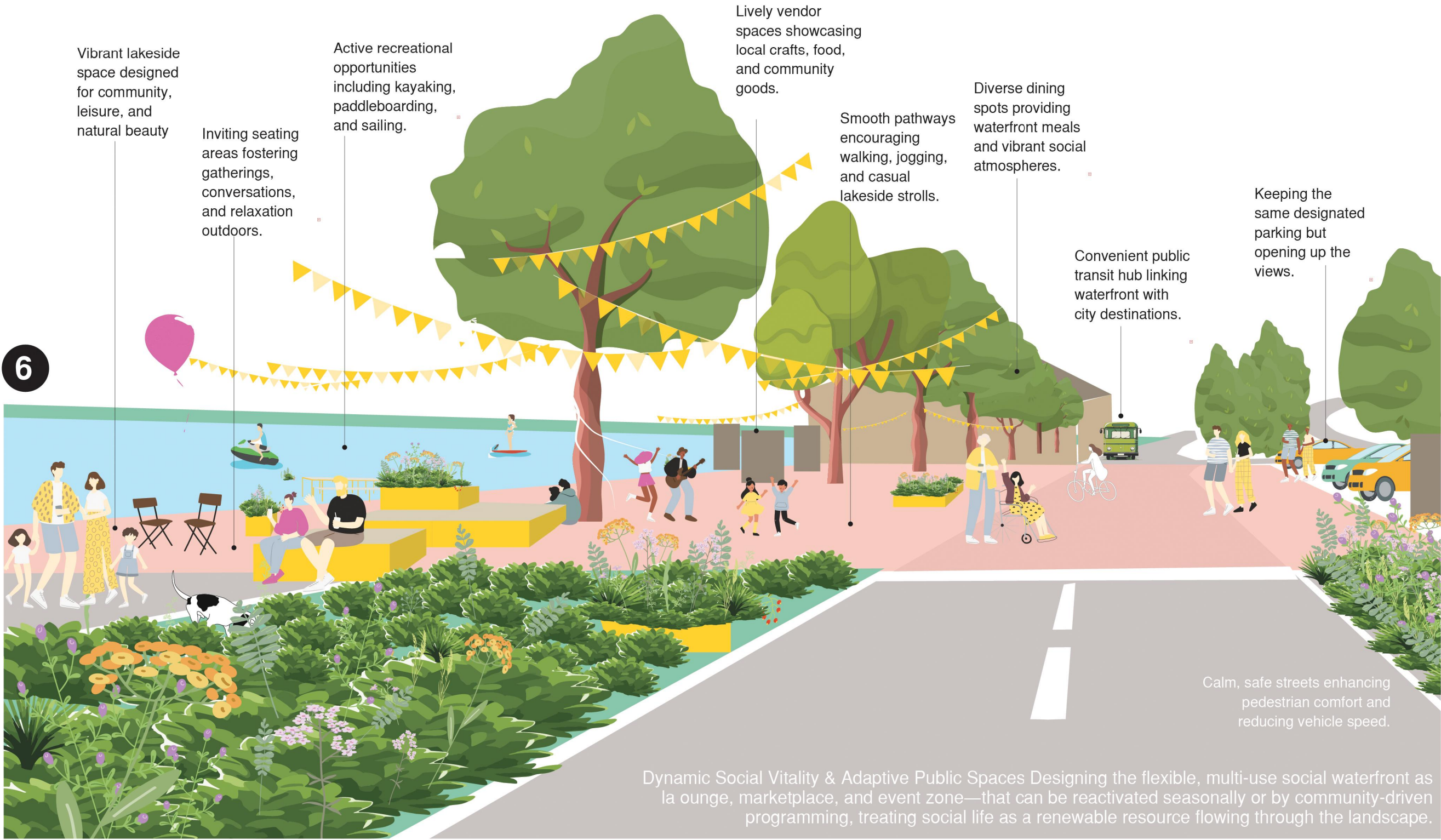


Playful Biomorphic Forms & Nature-Inspired Design Using organic shapes and natural materials in the interactive intervention e.g., mushroom-shaped wooden tree tops for climbing, outdoor library and to foster playful exploration, encourage community engagement, and connect people physically and emotionally to the living landscape.



## Haransilma Meadow Retreat

**Ecological Harmony & Sensory Rest Zones** Proposing Tranquil natural areas like the forest yoga and picnic clearing using minimal intervention and native plantings, offering restorative, slow recreation spaces that balance social vitality with quiet ecological harmony. Using native flora and local forest wood to root the project in place.



## Teivaa Waterfront Gateway

