

THE LIVING

LANDSCAPE: A VISION FOR LAHTI SPORTS CENTRE

The Living" is not a static design—it's a dynamic organism inspired by the intelligence of biological systems, where form emerges through function and connection.

At the heart of our proposal is the principle of re-sourcing: the belief that social vitality itself is a renewable resource—one that can be recovered, reactivated, and redistributed across the landscape. Here, public life is not an overlay but a core utility, pulsing through the terrain like signals in a living body. The Salpausselkä Ridge, once sculpted by glacial forces, becomes a new kind of spine—a connective tissue linking nature, sport, and culture. It no longer divides; it integrates. The masterplan is organized around eight programmatic organs—each a vital node of interaction, uniquely shaped to reflect its function, yet working in unison as part of a living, interdependent whole.

The Organs are the Key programmatic nodes

BREATH
– Accessible Waterfront
(navigation, fresh air, eating/boats)
Breathing space for leisure, relaxation, and renewal.



MEMORY
Historical Route
The memory path—thinking, remembering, and orienting through layers of time.



STRENGTH
– Physical Fitness Area
Powering strength, motion, and active engagement with the terrain.



HEART
Core Area
Pumping social energy through the landscape's living core.



VISION
Viewing Tower, Spectator area, Flying Squirrel Area
A vantage point for insight—where perspectives converge and the landscape unfolds in every direction.



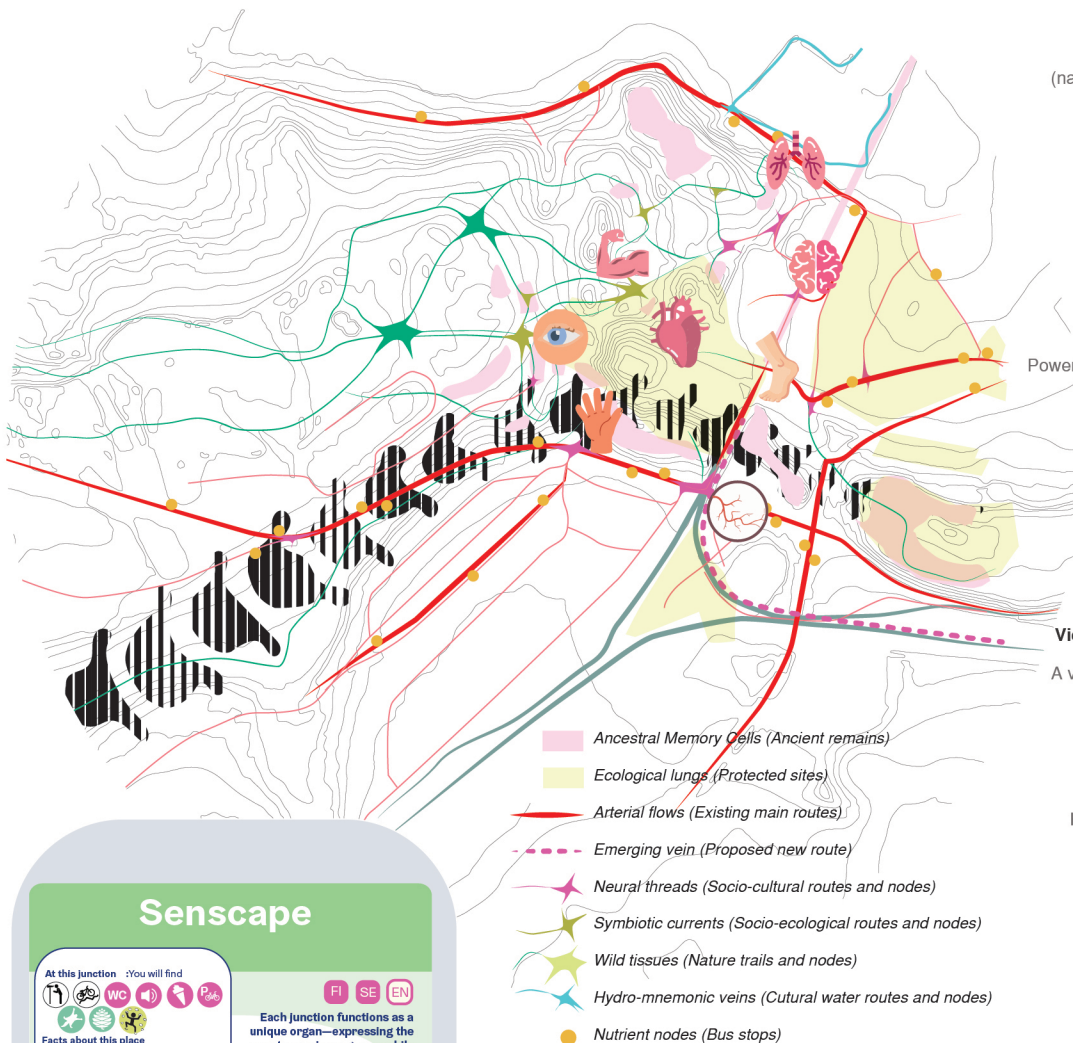
FEEL/TOUCH
– Rear Access (parking/food)
Handling the everyday—offering access, service, and simple comforts



SPEED
Mobility Hub
Grounding the flow of people—initiating movement and connection.



EMERGING VEINS
– New Connection Route
Carrying life through the plan—circulating energy, people, and possibility.



Senscape

At this junction, you will find

WC, P, Fi, SE, EN

Facts about this place

You might be able to spot a flying squirrel in this forest behind you.

The Ski Viewing Tower at this junction with a top observation deck offers a 360-degree view of Lahti and its surroundings, accessible by stairs or elevator, with the best views during ski events!

You are here

Welcome to Lahti

GET DIRECTIONS

JUNCTION INFO

Each junction functions as a unique organ—expressing the sports area's programs while guiding your senses and wayfinding.

The Lahti Sports Centre's Senscape App is designed as an interactive sensory landscape map, where each key programmatic node is symbolically represented by one of eight "organs"—a living system in which form follows function. These synapse-points act as branded junctions within the terrain, guiding movement, orientation, and experience. At the "Eyes" junction, for example, features like the Viewing Tower, Spectator Area, Flying Squirrel Trail, and amenities like WC etc.

This organ-based design approach transforms the ridge into a readable, memorable terrain—where navigation is intuitive, and identity emerges through embodied function.

THE LIVING

LANDSCAPE: A VISION FOR LAHTI SPORTS CENTRE

PROPOSED WATERFRONT AREA

paved-accessible pedestrianised – slowed traffic – social lounges – water sports – open views – marketplace – restaurants and cafes – boating facilities – navigating through waterlines – bus stop – bicycle parking – seamless connections.

PROPOSED FOREST YOGA, SOFT EVENT SPACE & PICNIC AREA

open clearing – low-impact stage – daytime acoustic zone – log seating – sun-bathing benches – colourful meadow – picnic spots – silent zone – forest yoga – natural materials – sensory rest – minimal intervention – ecological harmony – slow recreation.

PROPOSED SKI SPECTATOR AREA

wooden decks with integrated vegetation – erosion control mats and geotextiles – native drought-tolerant plants (*Juniperus communis*, *Empetrum nigrum*, *Arctostaphylos uva-ursi*) – native grasses (*Festuca ovina*) – biochar for soil enhancement – infiltration trenches for water management.

INTERACTIVE HISTORICAL ROUTE

movable art installations – QR codes for stories – soundscapes – modular signage – pop-up events – bike-friendly – seasonal exhibitions – community participation – flexible, engaging heritage path.

SALPAUSSELKÄ MINI PARK

Proposed new park - Salpausselkä miniature landscape - new parking layout – pedestrian-friendly axis circulation – green infrastructure integration – grand event welcome area – dynamic promenade – flexible event spaces – enhanced green zones – intuitive wayfinding – accessible navigation – sustainable landscaping – social hubs – active public spaces - nature play

MOBILITY HUB

Proposed entry zone – Entry ticket – new roundabout – paved pedestrianized layout – railway stop – bike parking – electric bike stations – wheelchair parking – waiting area – bus route integration – shaded zones – taxi drop-off – clear wayfinding – green buffers – accessible pathways.

PROPOSED PEDESTRIAN CONNECTION

mushroom-shaped wooden umbrella decks – integrated library and seating areas – playful climbing structures for children – hop between mushrooms – interaction with surrounding trees – shaded zones for rest – vibrant, nature-inspired design – fostering community engagement.

REVITALIZED SPECTATOR AREA

underground facility with stepped roof – green roofs for sustainability – modular seating – flexible event space – erosion control with native vegetation – permeable pathways – windbreaks and shelters – accessible routes – interactive exhibits – multi-use zones for summer and winter.

EXISTING SERVICES

- PARKING AREA
- BUS STOP
- CITY BIKES
- HISTORICAL EDUCATION
- RESTAURANT
- CAFE
- SAUNA
- BOATING/FISHING
- ROWING
- MOUNTAIN BIKE
- DOG SWIMMING AREA
- MARINA
- PASSENGER BOATS
- SKIING
- WEIGHT TRAINING
- OUTDOOR EQUIPMENT
- VIEWING TOWER

PROPOSED URBAN SERVICES

- PARKING AREA
- BUS STOP
- RAILWAY STOP
- CITY BIKES
- BICYCLE PARKING
- ANNOUNCEMENT POINTS
- TICKET SALES
- RESTAURANT
- CAFE
- HOTEL
- ICECREAM STALLS
- FIRE TORCH
- MUSIC
- ART & HISTORY POP-UP

PROPOSED NATURE & RECREATION

- FISHING AREA
- NATURE TRAIL
- FIRE/GRILL AREAS
- SAUNA
- PICNIC AREA
- FLYING SQUIRREL AREA
- FOREST BERRIES
- SUNBATHING/RELAXING
- ROWING
- VIEWING NATURE
- FOREST WOOD REUSE
- NEW VEGETATION
- CHILDREN PLAY

PROPOSED OUTDOOR SPORTS

- TRAINING ON STAIRS
- SKIING WITH DOG
- CLIMBING WALL
- SLOPE CLIMBING WITH ROPES
- WEIGHT TRAINING
- PARKOUR
- OUTDOOR EQUIPMENT
- SWIMMING AREA
- WATER SPORT

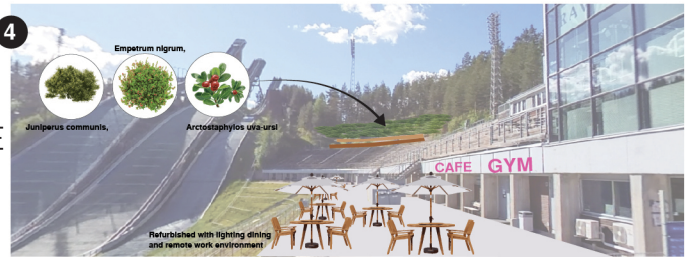


THE LIVING

LANDSCAPE: A VISION FOR LAHTI SPORTS CENTRE

Entry & Central Mobility Hub

Seamless Multimodal Mobility & Accessibility Integrating all transport modes—pedestrians, cyclists, public transit, cars at the entrance of the Sports centre—with accessible one way platform, ticket counter and info, wayfinding, and green buffers, ensuring accessible, comfortable, and efficient circulation across the site and enhancing connectivity between organs.



Ecological Harmony & Sensory Rest Zones Develop tranquil natural areas like the forest yoga and picnic clearing using minimal intervention and native plantings, offering restorative, slow recreation spaces that balance social vitality with quiet ecological harmony.



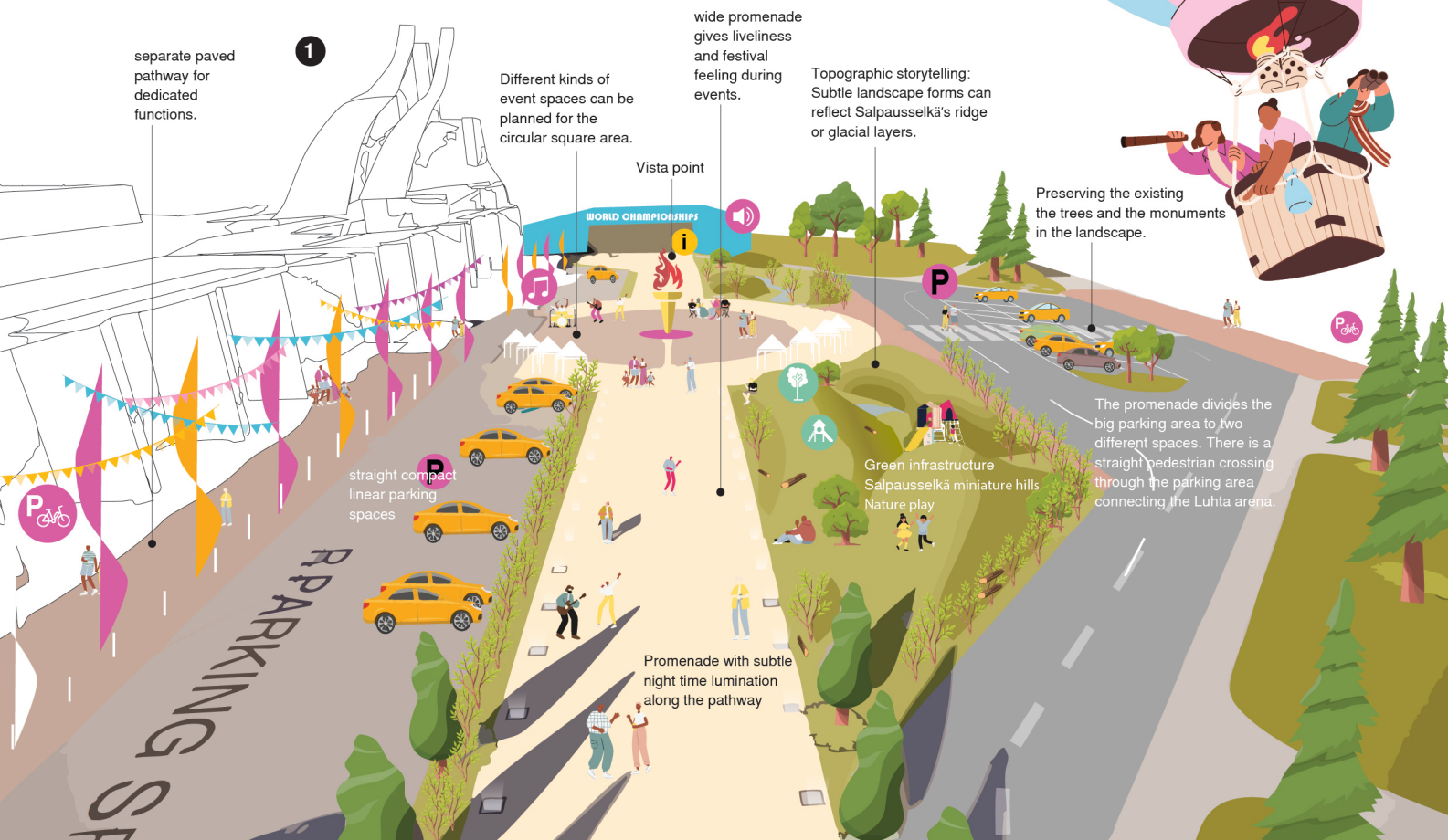
Haransilma Meadow Retreat

Salpausselkä Promenade

Living Spine & Ecological Integration Spreading the Salpausselkä Ridge into the central area as a unifying, green spine that organizes the site and supports biodiversity through native vegetation, green infrastructure, and water management—dividing the grey parking with a natural landform where people of all ages can engage with nature, actively participate in the more organised event space while connected to all the spaces visually.



Heart & Emotions



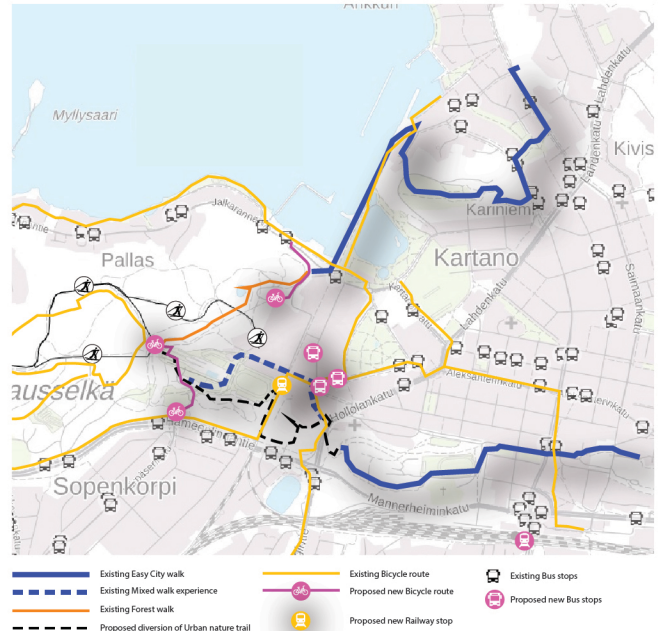
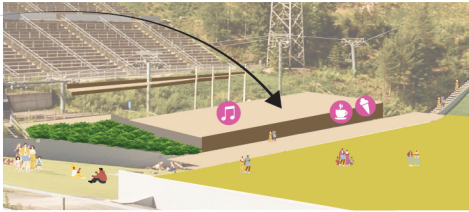
THE LIVING

LANDSCAPE: A VISION FOR LAHTI SPORTS CENTRE

Playful Biomorphic Forms & Nature-Inspired Design Using organic shapes and natural materials in the interactive intervention e.g., mushroom-shaped wooden tree tops for climbing, outdoor library and to foster playful exploration, encourage community engagement, and connect people physically and emotionally to the living landscape.

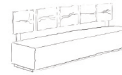


- 5** Renewing the stage and platform, Adding new amenities for social engagement such as summer time ice cream, renting equipments such sticks for exercising on the stairs



Origins and Nature – Pre-Industrial Landscape (Pre-1800s)

A low stone bench with inlaid carvings of old trade routes or waterways, paired with a tall weathered wooden post that contains engraved symbols or maps.



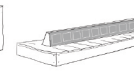
Railway Boom – Industrial Emergence (1860s–1900)

A robust "timeline monolith"—steel plate bolted into stone base, flanked by upright timber elements that reference rail sleepers.



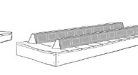
Golden Age of Industry and Trade (1900–1950s)

Long, low "working bench" mimicking a cargo platform, with embedded archival imagery in stone plaques.



Decline and Disuse (1960s–2000s)

A cut-through "track remnant" installation—a sunken or embedded rail motif using smooth black stone in a concrete frame, like a ghost of the tracks.



Revival and Reimagination (2010s–Today)

A linear "dialogue stones" of upright wood-and-stone panels inviting people to reflect, read, or sit.



Historical Path of Memories Intervention -- Satamaradanpolku

7

Teivaa Waterfront Gateway

Dynamic Social Vitality & Adaptive Public Spaces Designing the flexible, multi-use social waterfront as la lounge, marketplace, and event zone—that can be reactivated seasonally or by community-driven programming, treating social life as a renewable resource flowing through the landscape.



Memory

"Path of Memories" is a chronological walking route along Satamaradanpolku in Lahti, marked by five historical phases. Through durable, site-specific installations, it reveals the area's transformation from natural landscape to industrial hub and into a reimagined urban heritage path.

6

Vibrant lakeside space designed for community, leisure, and natural beauty

Inviting seating areas fostering gatherings, conversations, and relaxation outdoors.

Active recreational opportunities including kayaking, paddleboarding, and sailing.

Lively vendor spaces showcasing local crafts, food, and community goods.

Smooth pathways encouraging walking, jogging, and casual lakeside strolls.

Diverse dining spots providing waterfront meals and vibrant social atmospheres.

Convenient public transit hub linking waterfront with city destinations.

Keeping the same designated parking but opening up the views.

Calm, safe streets enhancing pedestrian comfort and reducing vehicle speed.

