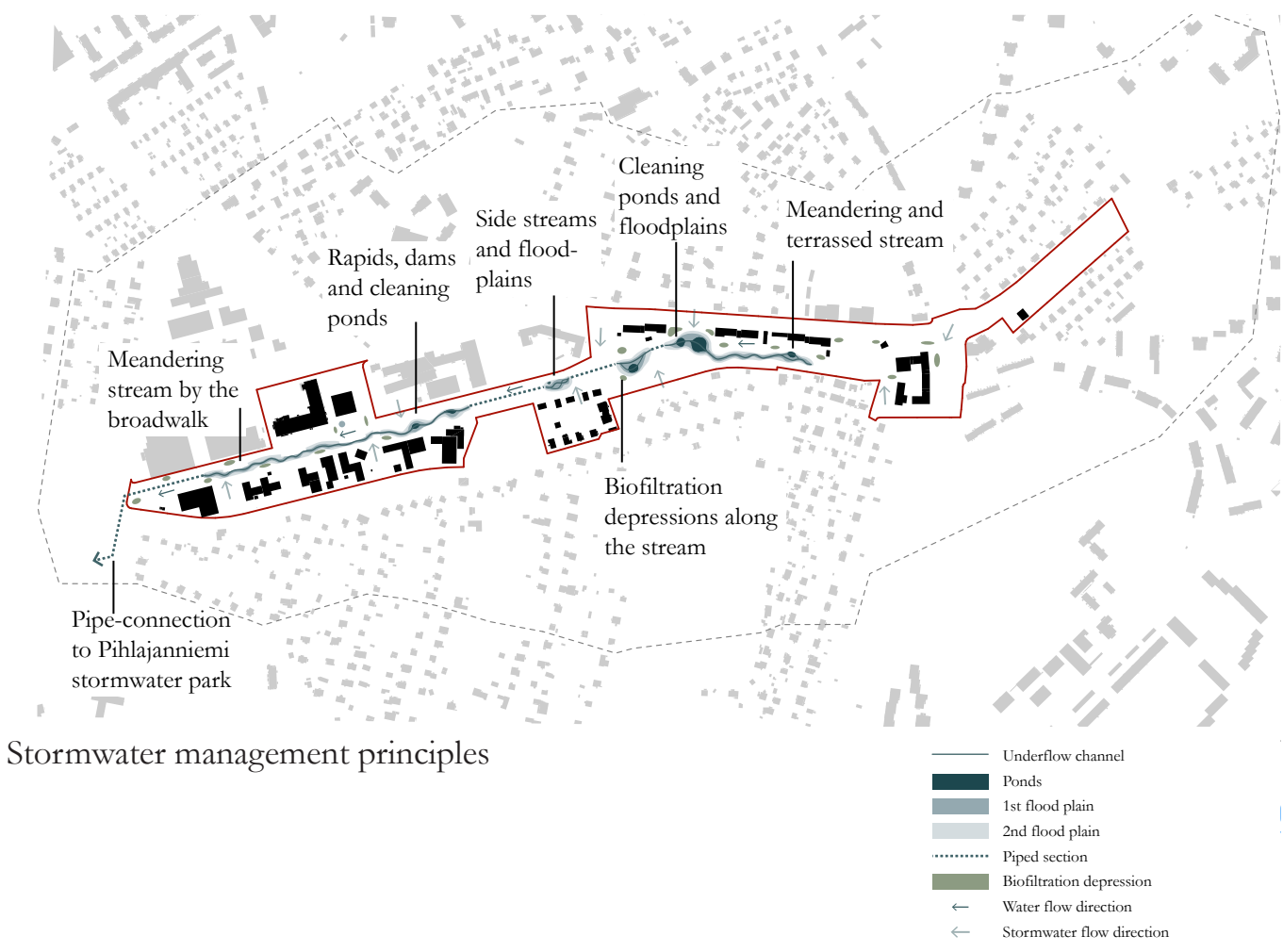
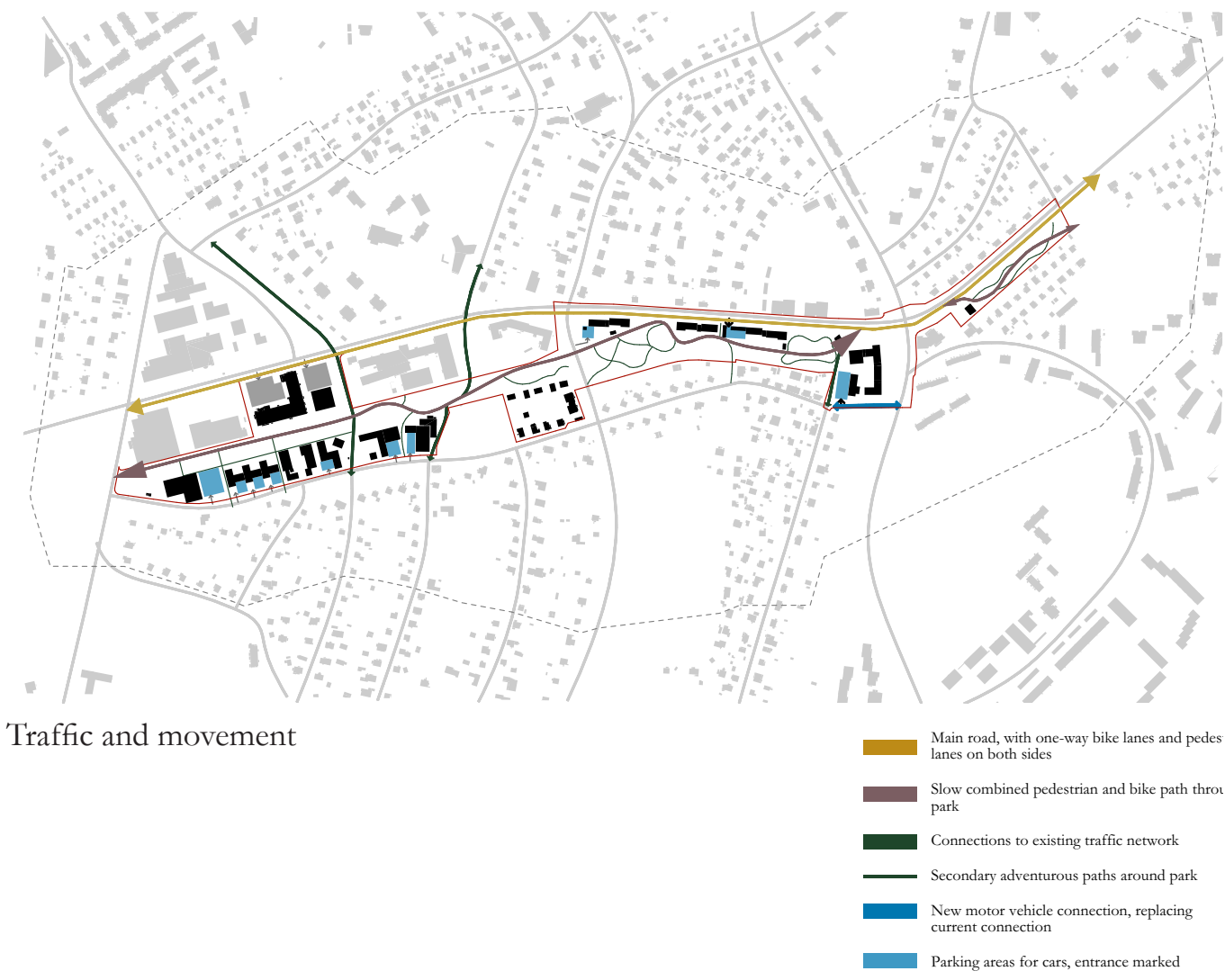


First area to be developed, 1: 800

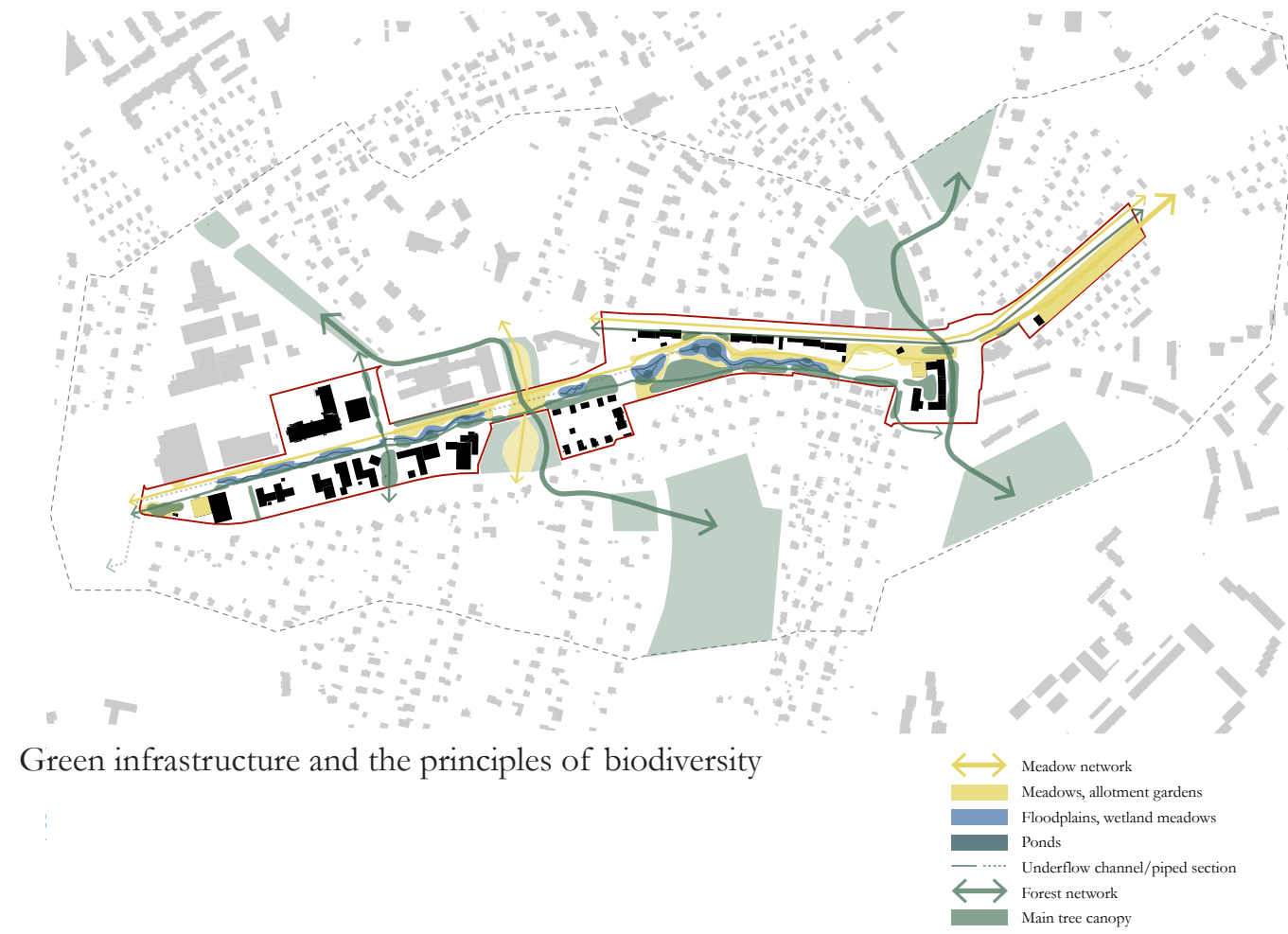
Diagrams



Stormwater management principles



Traffic and movement



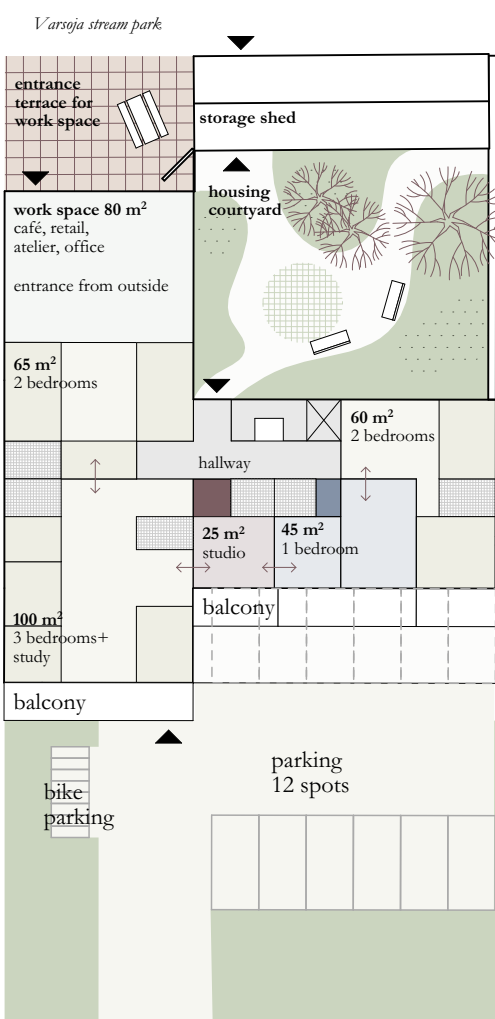
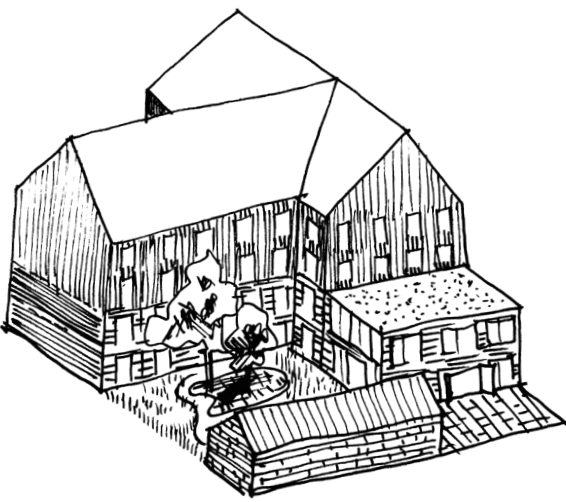
Green infrastructure and the principles of biodiversity

Housing solutions

All housing in Bäckbo is planned to be adaptable to different situations in life. The apartments are designed so that there are flexible rooms, that can be a part of another apartment. When the living situation changes, the apartments can easily change.

Housing on Puistomäentie Road

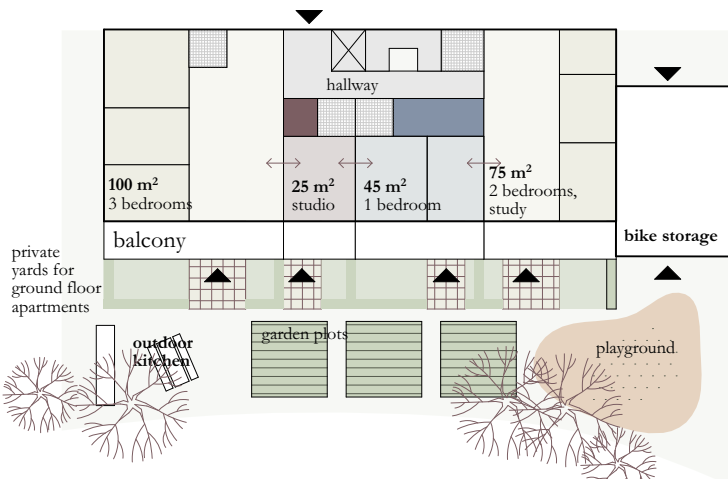
The apartment buildings on the current industrial area are dense and urban. The houses consists of apartments and work spaces. The work spaces are situated by the stream on the north side, outfitted with a stone terrace for the business to expand to. There is also a private backyard for tenants that will act as their secret garden. The shed houses bikes and other outdoor equipment, and shelters the yard.



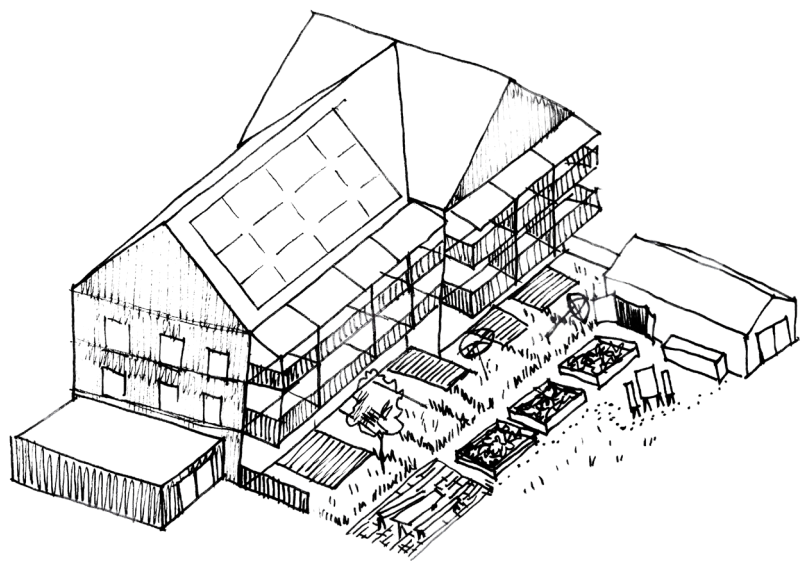
Adaptable housing on Puistomäentie Road
Combination of typical floor plan and site plan
↔ room can be combined to larger apartment

Housing on Vähäheikkiläntie Road

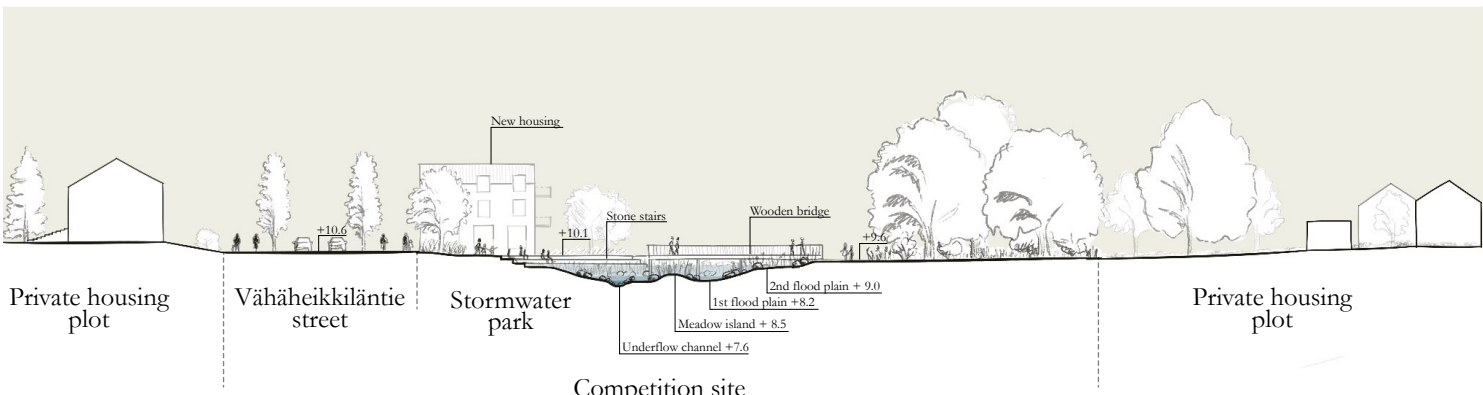
The apartments next to the Vähäheikkilä Road face the park and turn their backs to the road. All apartments have their own outdoor space. There are gardening lots and space for a shed, as well as an outdoor kitchen on the private yard. Next to the park, there are pergolas and fruit trees to provide shade from the sun and shelter from the park.



Adaptable housing on Vähäheikkiläntie Road
Combination of typical floor plan and site plan
↔ room can be combined to larger apartment



Cross-section



Perspective view of the first area to be developed towards east.

