

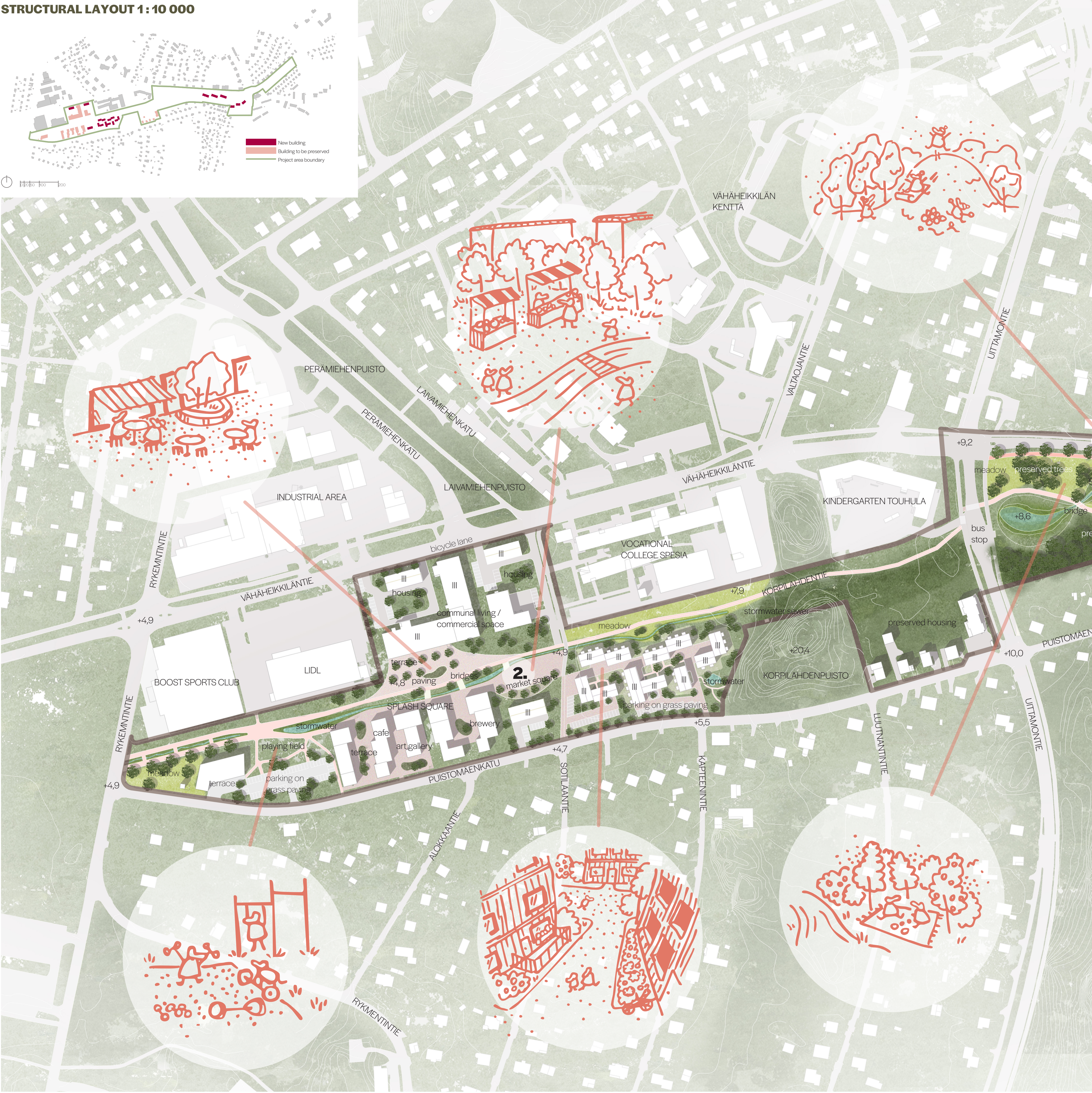
PE888

01

TURKU (FI)

DRIP DRIP HOORAY

STRUCTURAL LAYOUT 1: 10 000



INTRODUCTION

The design, titled Drip Drip Hooray, combines the theme of water with a sense of celebration. The name reflects both the central role of water in the design and the aim to create a vibrant, welcoming neighborhood. The project focuses on developing a small-scale, livable environment in Vähäheikkilä, with a strong sense of community and local identity.

The design concept embraces the idea of extending the Aura River into the site—not as a literal river, but as a symbolic and seasonal water feature that reflects its identity. Though it may not always contain water, it continues the narrative of the river within the urban landscape. This is interpreted both spatially and ecologically through a stormwater management system that acts as a smaller version of the river within the neighborhood. The system not only handles water sustainably but also organizes public space and adds character to the urban environment.

The design respects the existing built environment by preserving many of the current industrial buildings. New construction takes cues from the old, using similar materials and forms to maintain continuity. Instead of replacing the area's existing character, the design emphasizes architectural layering and recognizes the value in buildings that may not be traditionally considered beautiful. This approach supports a more honest and grounded urban identity.

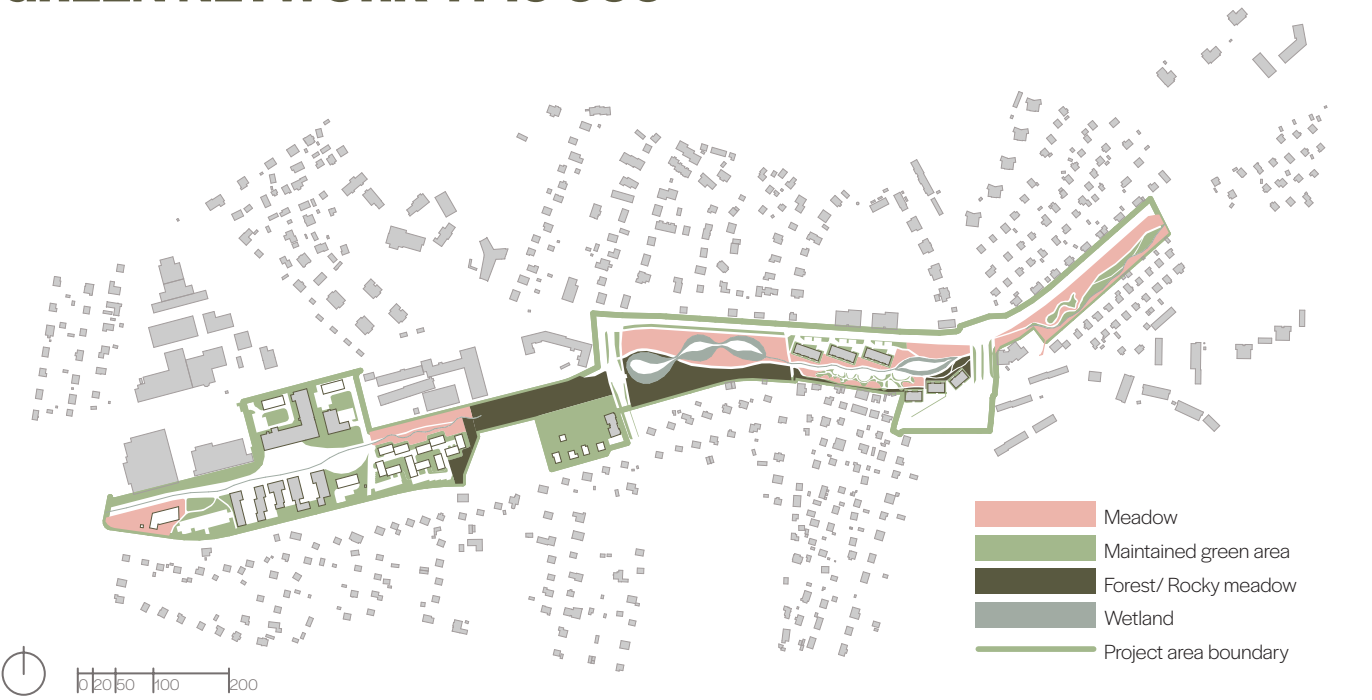
Vegetation is used to connect the site with its surroundings while introducing new elements that contrast with the typical look of detached house gardens. Vegetation is selected to fit the local context but provide a different kind of spatial and ecological experience that adds variety and richness to the area.

The services and uses within the area are designed to support daily life and strengthen community ties. Existing industrial structures are repurposed to house small-scale commercial and cultural activities. These include gallery spaces, workshops, and adaptable areas suited for pop-up uses and changing services. A distinct characteristic of the neighborhood is the presence of local production-focused businesses such as a brewery, coffee roastery, bakery, or café, all contributing to a lively and locally grounded atmosphere.

Overall, Drip Drip Hooray offers a development model that builds on what is already there, integrates water as a guiding element, and creates a strong, people-oriented urban structure rooted in place.



GREEN NETWORK 1: 10 000



STORMWATER MANAGEMENT 1: 10 000

