

DESCRIPTION

1. Lahti Suurhalli, 7900 sqm
2. Lahti Expo Center, 8000 sqm (possibly redeveloped in final phase)
3. Power Plant, 9400 sqm - renovated into mix-used hub
4. Media square, 8000 sqm
5. Water sport center, 9000 sqm, 3 floors - Sauna rooftop 300sqm
6. Isku Arena 10000 sqm (possibly redeveloped in final phase)
7. Parking hall - underground at +98.00, 1 floor - 8200 sqm

Parking calculation

1. Parking hall - 285 slots
2. Water sport center - 79 slots, reserved 9 slots
3. Reserved parking space on the ground floor for accessibility - 8 slots
4. Reserved parking space on media area - 30 slots

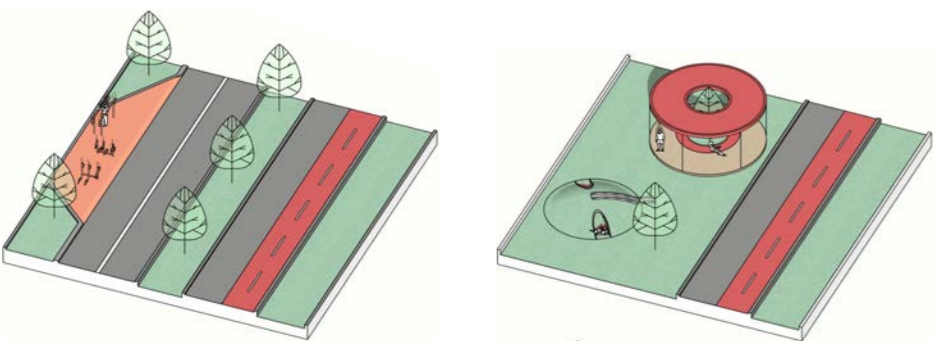
Total: 372 - 411 parking slots

Master plan 1: 2000

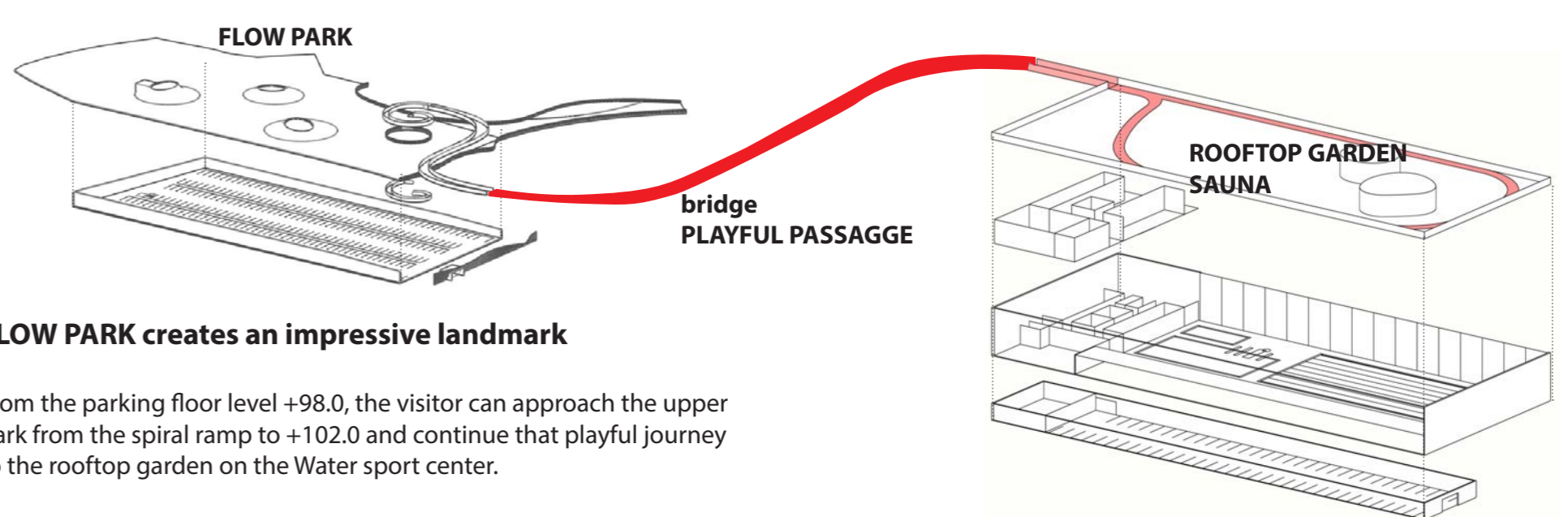
- bike lane
- bike parking
- bus stop
- landscape elements

Profound landscape structure

The FLOW – Playful Passage project is set to become a landmark of urban innovation, where sports, culture, and community life flow seamlessly together. By embedding playful, accessible, and sustainable features, such as a mega pedestrian bridge, skating park, and cultural hub, the site will offer a joyful journey for all who visit



Comprehensive Street Section: Integrated Traffic, Cycling, Pedestrian and Recreational Layers
VEIKKO KANKKOSENREITTI / TEIVAANKATU and SATAMARADANKATU can be reclaimed as a shared street to engage the local inhabitants.



FLOW PARK creates an impressive landmark

From the parking floor level +98.0, the visitor can approach the upper park from the spiral ramp to +102.0 and continue that playful journey to the rooftop garden on the Water sport center.

The red bridge will become the new entrance gate to Salpaus sport campus from both main axes. It improves the orientation of the site.

