

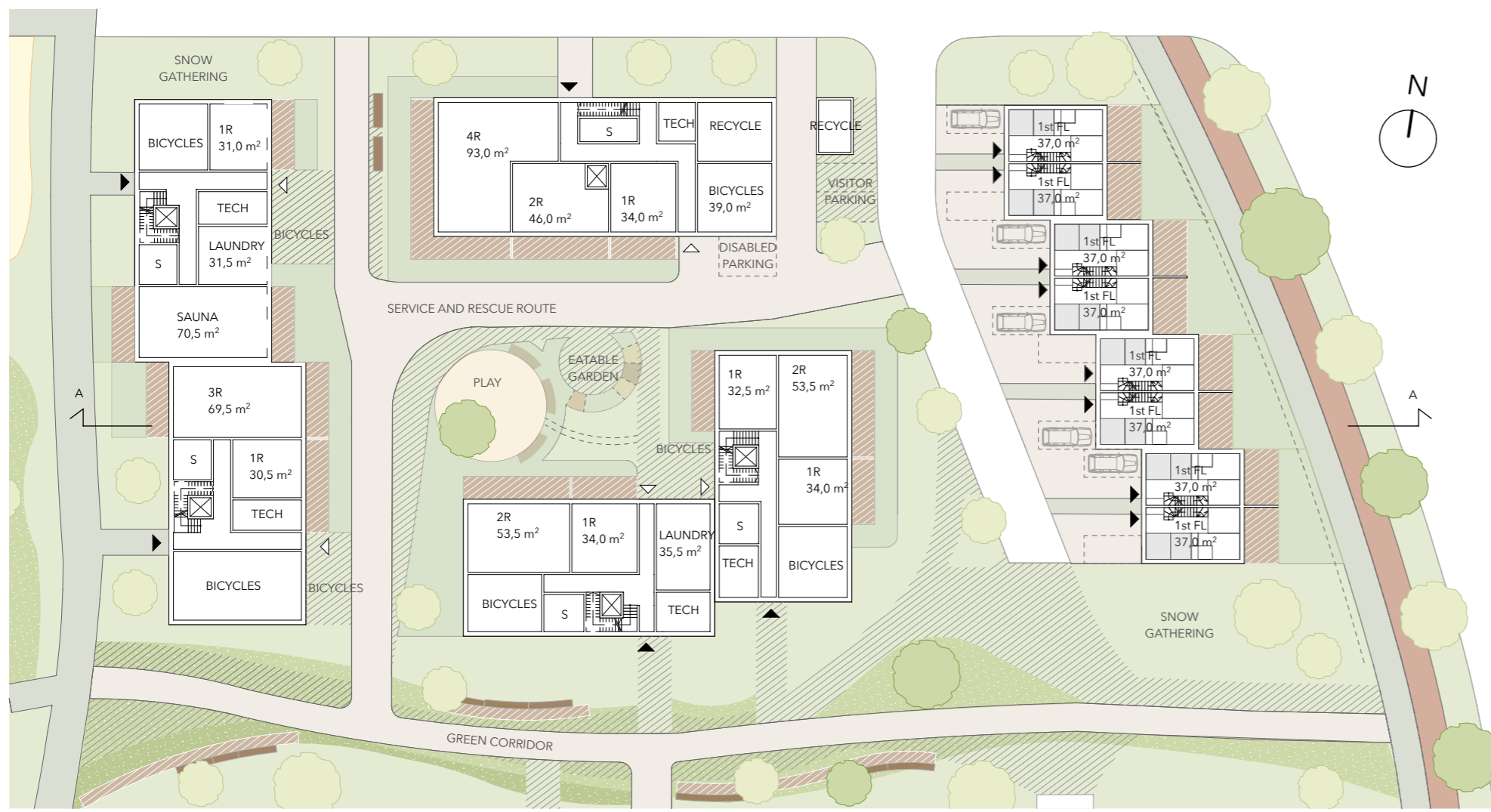
SECTION 1:500

SOUTH ELEVATION 1:500

20 m



FLOOR PLAN, BASIC FLOOR 1:500



FLOOR PLAN, GROUND FLOOR 1:500



EAST ELEVATION 1:500

TOWNSCAPE, MASSING AND ARCHITECTURE

The building masses in the new residential area slope towards the waterfront. The relatively compact housing blocks on plots 1 and 2 are surrounded by three-storey townhouses on the eastern side of the site. On plot 3, the more open and slightly more freely positioned buildings are terraced towards the waterfront. The small apartment blocks, townhouses and taller apartment buildings in the central part of the site make for a varied and interesting environment. The smaller scale of reflection site's villas is also visible in the centre of the housing area through the courtyard buildings that serve as communal spaces.

The buildings have gabled or flat roofs and their facades are mainly made out of wooden cladding. The colours of the surrounding building stock or reflect the colour schemes of the different seasons. The gable roofs protect the facades from rain and snow. Flat-roofed buildings offer a possibility for green roofs or, alternatively, roof terraces and solar panels that generate energy locally.

TYPICAL HOUSING BLOCKS & HOUSING SOLUTIONS

In the blocks of flats, there is a varied mix of housing and all apartments have either a courtyard or balcony. The activation of the ground floor has been essential to the design. The ground floor is used for block-specific sauna facilities and apartments. For the convenience of the residents, storages are located on each floor. Due to the rocky soils, basement construction in the area has been minimised.

Townhouses offer larger family housing in the area. Living areas and balconies opening up to two directions make the apartment airy.

